

PROTEINA Spectra BCL2 Family Assay

Unlock the Potential of BCL2 Inhibitor Therapy:
Gain critical insights for optimal patient outcomes

01. Executive Summary



- **Targeted Protein-Protein Interaction (PPI) Biomarkers**
 - BCL2-BIM_{BH3} PBA - BCL2-BAX CPX - BCL_{xL}-BAK CPX
 - *PBA = Probe Binding Assay, CPX = Complex
- **Sample Type Compatibility**
 - Bone marrow mononuclear cells
 - Peripheral blood mononuclear cells



Personalized Therapy Prediction




Optimize treatment with our assay's precise predictions of BCL2 inhibitor effects in patient-specific cellular environments, ensuring tailored therapies for superior outcomes.



Strategic Therapeutic Planning

Leverage our risk-benefit assessment for Acute Myeloid Leukemia (AML) to inform therapeutic choices and empower clinicians to craft targeted treatments for optimal patient care.

02. The Present Landscape of BCL2 Inhibitors

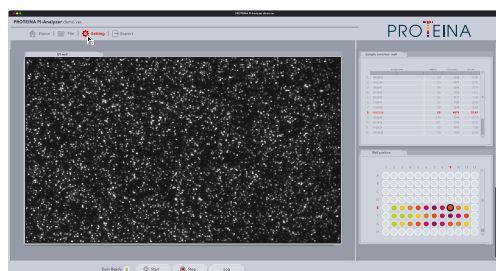
 Current Developments	 Immediate Challenges	 PROTEINA's Solution
<p>BCL2 inhibitors enhance AML treatment, especially with hypomethylating agents or chemotherapy, achieving a 63% complete remission rate as shown at the 2023 European Hematology Association Annual Congress.</p>	<ol style="list-style-type: none"> 1. Treatment Response Variability: About one-third of patients show little to no response to BCL2 inhibitors. 2. Side Effect Monitoring: Monitoring is crucial to manage potential adverse effects in some patients. 	<p>Our Spectra BCL2 Family Assay optimizes drug use per patient, aiding in disease management and patient risk stratification. This method tackles response variability and aids in side effect management.</p>

03. Operation Overview

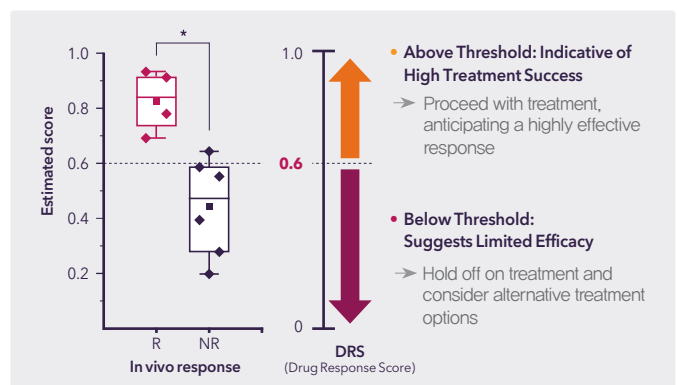
1. Quantification: Vital PPI biomarkers associated with BCL2 inhibitor response are counted

- BCL2-BIM_{BH3} PBA - BCL2-BAX CPX - BCL_{xL}-BAK CPX

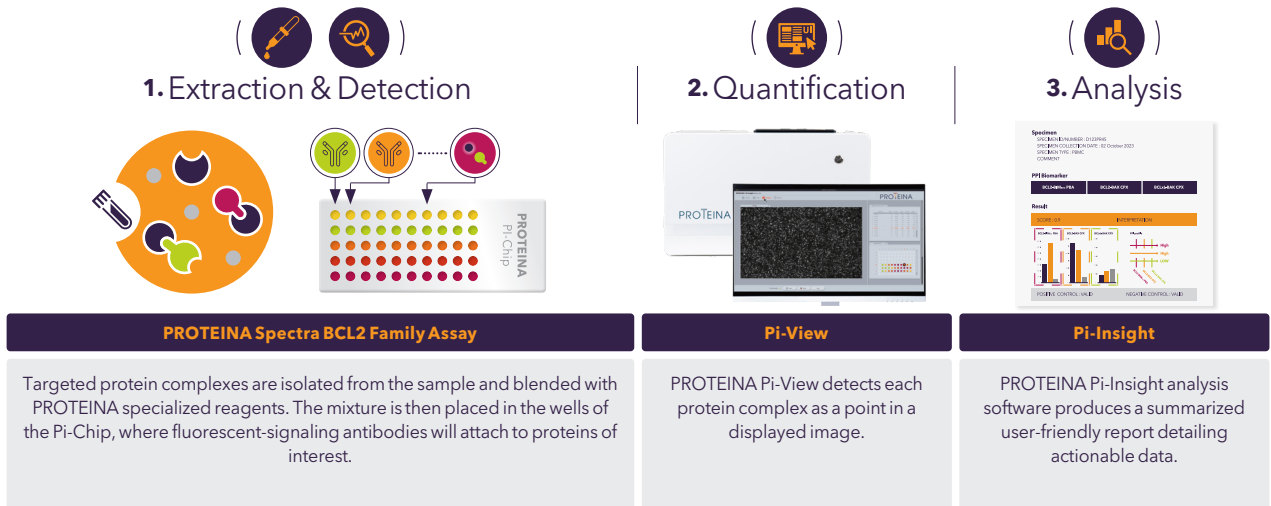
2. Analysis: PROTEINA Pi-Insight software converts proteomic bioinformation into actionable data



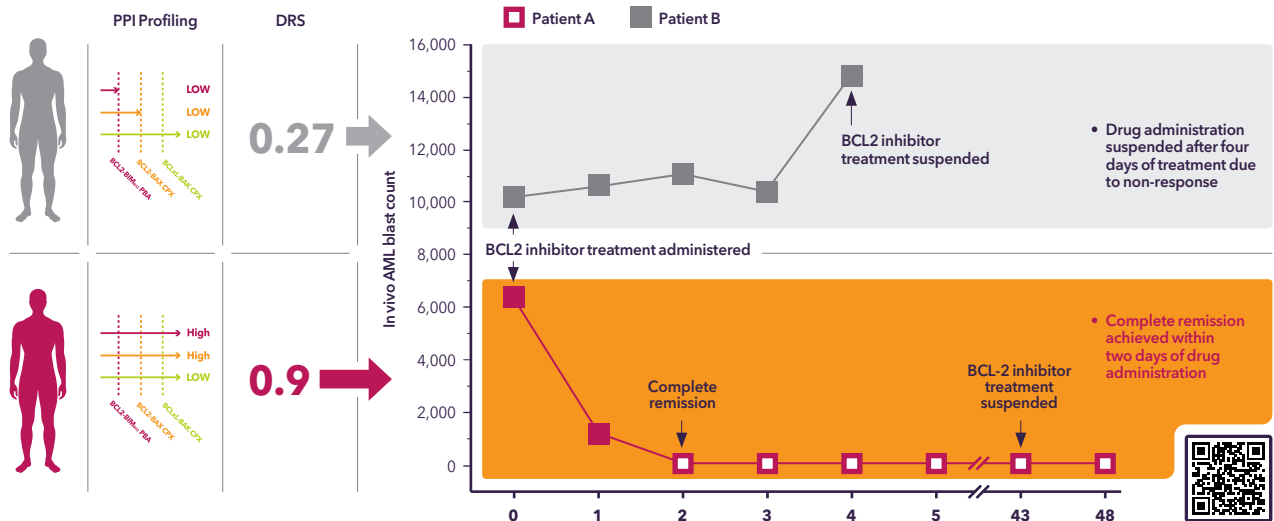
3. Decision: User decides course of treatment action using a clear "Go/No-Go" indicator



04. Assay Workflow



05. Clinical Study



06. Assay Kit Contents

Reagent Overview

- Our reagents are tailored to match the unique traits of target proteins. Protocol adjustments are made based on sample volume, ensuring precise and accurate assay results. The kit includes all necessary reagents for the entire analysis process, from extraction to quantification.

Pi-Chip Features

- The PROTEINA Pi-Chip excels in selectively identifying target proteins, effectively controlling non-specific adsorption. Currently available in two configurations: 40 and 384-well formats.

• The PROTEINA Spectra BCL2 Family Assay is analyzed through the Pi-View and Pi-Insight analysis software

Contact Information

Discover the potential of PROTEINA's offerings for your research needs. For product inquiries or to explore our specialized research services, please reach out to us at the contact details provided below. We're here to assist you in advancing your scientific endeavors.

E mail : info@proteina.co.kr / Homepage : www.proteina.co.kr
 Phone : +82-2-6959-9309 / Fax : +82-2-6959-9493
 Address : #1301 Ace Techno Tower 8, 11 Digital-ro 33-gil, Guro-gu, Seoul, Korea